

OLYMPUS®

Your Vision, Our Future

DIGITAL CAMERA

DP20

2 million pixel resolution

NEW

Full-resolution, high-speed, high-quality imaging

*Ideal educational tool with an easy-to-view
seamless live image*



*PC connectivity via USB2.0 or
stand-alone operation*



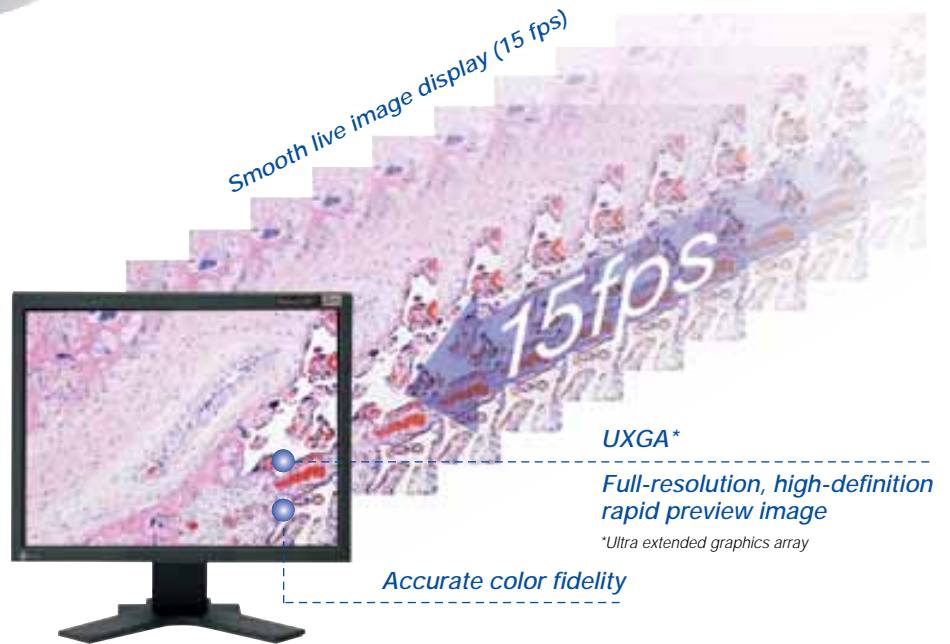
Live, high-resolution microscope images are displayed seamlessly at 15 frames per second on a large monitor, projector or PC.

Integrate the DP20, stand-alone digital camera to a large, high-definition monitor for stunning detail and crisp color right at your desk!



Smooth live image display at 15 frames per second for comfortable viewing

With its 2-megapixel CCD, the DP20 offers a smooth, easy-to-view display of high resolution images at 15 frames per second. Image quality is consistent; from a high-resolution monitor or projector to a laptop computer.



Choose from a variety of display options. Output the image to a monitor, projector, or laptop computer*.

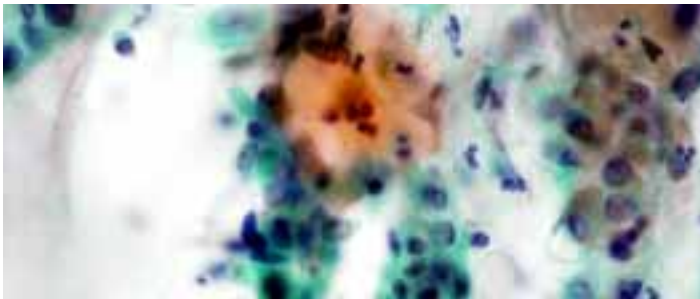


*Software required



UXGA high-definition display coupled with outstanding color reproduction

Display images at 15 fps on a 1600 x 1200 UXGA high-definition monitor. Acquire high-resolution images with superior color fidelity for true color reproduction of H&E, Papanicolaou, and other stained specimens.



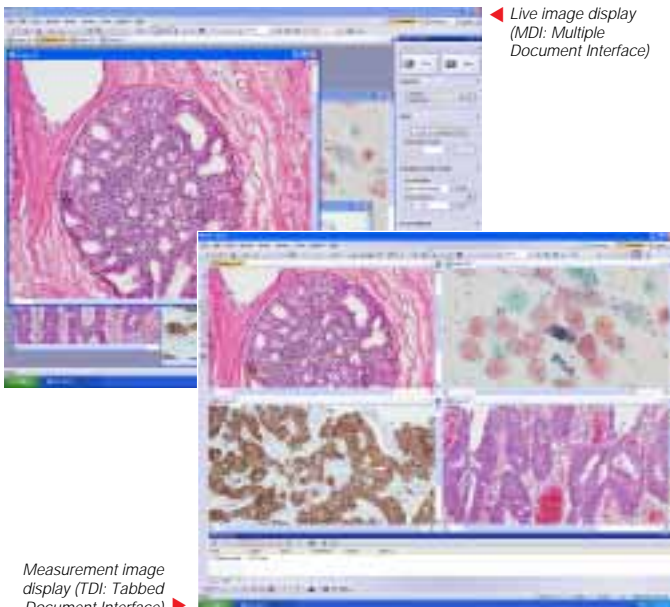
24-bit image display (16.7 million colors)

Easy-to-use, stand-alone control

The ergonomic handset control unit has functional key layout for quick and easy control, from image acquisition to measurement. Digital zooming function (up to 4 x) enables fast and accurate focusing even at lower magnifications.



DP2-BSW (optional software)



◀ Live image display (MDI: Multiple Document Interface)

Measurement image display (TDI: Tabbed Document Interface) ▶

PC control with optional DP2-BSW software*

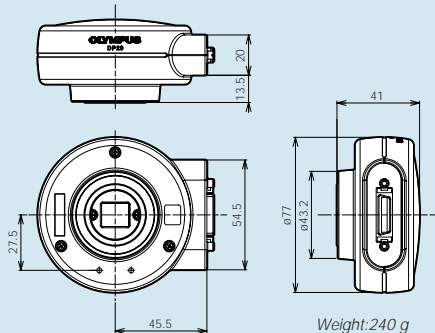
- USB2.0 PC control
- Selectable GUI (MDI or TDI)
- Measurement functions
- Simple time-lapse



Dimensions

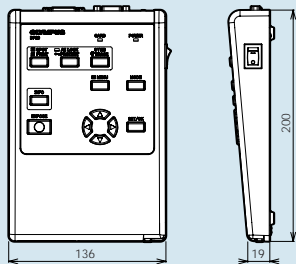
(unit: mm)

Camera head



Weight: 240 g

Handset control unit



Weight: 630 g

Interface cable: length 1.5 m

DP20 digital camera components



The DP20 digital camera system includes: camera head, handset control unit, interface cable, USB cable, and CD-ROM (DP20-DRV, a simple image file transfer software)

DP20 specifications

Camera	Type	Single chip color CCD camera with control panel		
	Mount	C mount		
Imaging sensor	Size	1/1.8 inch		
	Effective pixels	2.01 megapixels (total: 2.11 megapixels)		
	Pixel size	4.4µm x 4.4µm		
	Scanning method	Progressive scan		
	Color filter	RGB Bayer primary color filter		
	Maximum recorded pixels	1.92 megapixels (1600 x 1200)		
Sensitivity		Equivalent to ISO 100/200/400		
Image file size options	SHO	TIFF	1600 x 1200	Approx. 5.6 MB
	SHO	JPEG	1600 x 1200	Approx. 2.1 MB
	HO	JPEG	1600 x 1200	Approx. 0.7 MB
	SQ1	JPEG	1024 x 960	Approx. 1.3 MB
	SQ2	JPEG	1024 x 960	Approx. 0.5 MB
Storage media		Compact Flash Card (Type I, Up to 4.0 GB) (SanDisk Corporation or Lexar Media Inc. products recommended)		
Image display	Resolution	UXGA	1600 x 1200	
		SXGA	1280 x 1024 (display area 1280 x 960)	
		XGA	1024 x 768	
		SVGA	800 x 600	
		VGA	640 x 480	
	Live image display frame rate	15 frames per second (Maximum)		
	Electronic zooming	2x and 4x		
Exposure control		Auto: 1/20000 s to 2 s AE Lock Exposure Adjustment : Range of ± 2 EV, in 1/3 EV step Metering Modes: 30% center average, 2.5% spot Manual: 1/20000 s to 8 s		
Scale bar		Total configurable microscope magnifications: 00.01 — 9999.99 Maximum of 7 allowable settings		
Measuring functions		Point-to-point distance, circle radius, circle diameter, circle area, and distance between the centers of two circles *For optimal functionality, the following settings are necessary: Display resolution: UXGA or SVGA modes Scale bar: On Image file format: TIFF (SHQ)		
Input/output		DC input Data I/O: USB2.0 (Type B) Monitor output: analog RGB, miniature D-Sub15-pin (Compatible with DDC2B Plug and Play display) Compact Flash Card slot: Type I		
Operational conditions		Indoor use Temperature: 0 — 35°C, Humidity: 20 — 85% (non-condensing)		
Storage conditions		Temperature: -20 — 60°C, Humidity: 10 — 90%		

DP20-DRV image file transfer software

System requirements	OS	Microsoft Windows XP Home/Professional, 2000 Professional
	RAM	128 MB or more
	HDD	Required free disk space: 50 MB (at the time of installation) Each image requires 500 KB (SQ) – 6 MB (TIFF) of disk space
	Input/output device	USB2.0 port/CD-ROM
	CPU	Pentium III 500 MHz or higher
	Display	Resolution: 800 x 600 pixels or higher Display: 32-bit color or higher
	USB	USB2.0

DP2-BSW control software (optional)

System requirements	OS	Microsoft Windows 2000 Professional Edition SP 4/ XP Professional Edition SP2 (English and Latin alphabet-based language versions)
	RAM	512 MB or more (1 GB or more recommended)
	HDD	750 MB hard disk space for installation
	CPU	Intel Pentium 4 or Pentium M (Pentium 4 recommended) 1.3 GHz or higher (2 GHz or higher, Hyper-Threading recommended)
	Display	Screen resolution: 1024 x 768 pixels or higher (1280 x 1024 or higher recommended)
	Graphic card	32-bit color depth or higher (32-bit color depth recommended), RAM: 16MB or more
	USB port	Minimum of 2 ports (for DP20 connection and software protection dongle connection)

*All brands are trademarks or registered trademarks of their respective owners.



Specifications are subject to change without any obligation on the part of the manufacturer.



OLYMPUS

OLYMPUS CORPORATION
Shinjuku Monolith, 3-1, Nishi Shinjuku 2-chome, Shinjuku-ku, Tokyo, Japan
OLYMPUS LIFE AND MATERIAL SCIENCE EUROPA GMBH
Postfach 10 49 08, 20034, Hamburg, Germany
OLYMPUS AMERICA INC.
Two Corporate Center Drive, Melville, NY 11747-3157, U.S.A.
OLYMPUS SINGAPORE PTE LTD.
491B River Valley Road, #12-01/04 Valley Point Office Tower, Singapore 248373
OLYMPUS AUSTRALIA PTY. LTD.
31 Gilby Road, Mt. Waverley, VIC 3149, Melbourne, Australia.

OLYMPUS LATIN AMERICA, INC.
6100 Blue Lagoon Drive, Suite 390 Miami, FL 33126-2087, U.S.A.
OLYMPUS (BEIJING) SALES & SERVICE CO., LTD.
12-13F, NCI Tower, A12 Jianguomenwai Avenue, Chaoyang District, Beijing, 100022, China



This catalog is printed by environmentally-friendly waterless printing system with soy ink.

www.olympus.com